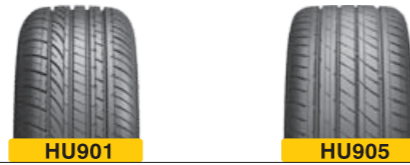


**HORIZON**

**HORIZON**

**ULTRA HIGH PERFORMANCE TIRE**



HU901

HU905

**HIGH PERFORMANCE TIRE**



HH301

HH306

**SUV, COMMERCIAL CAR TIRE**



HR801

HR802

HR805

**LIGHT TRUCK TIRE**



HR601

HR602

HR605

**AT, MT TIRE**



HR701

HM003

**ALL SEASON**



PMS01

PMS02

**WINTER TIRE**



HW501

HW505

HW507

HW508

ADVANCED MANUFACTURING FACILITIES 01

**ULTRA HIGH PERFORMANCE TIRE**

HU901 ..... 03  
 HU905 ..... 06

**HIGH PERFORMANCE TIRE**

HH301 ..... 09  
 HH306 ..... 11

**SUV, COMMERCIAL CAR TIRE**

HR801 ..... 14  
 HR802 ..... 16  
 HR805 ..... 18

**LIGHT TRUCK TIRE**

HR601 ..... 20  
 HR602 ..... 22  
 HR605 ..... 23

**ALL-TERRAIN & MUD TERRAIN TIRE**

HR701 ..... 25  
 HM003 ..... 27

**ALL-SEASON**

PMS01 ..... 29  
 PMS02 ..... 30

**WINTER TIRE**

HW501 ..... 32  
 HW505 ..... 34  
 HW507 ..... 36  
 HW508 ..... 37

**TECHNICAL KNOWLEDGE**

- SPEED RATING
- LOAD INDEX

# ADVANCED MANUFACTURING FACILITIES



With a professional R&D engineer team, Horizon has the advanced testing and manufacturing facilities, scientific and optimized production management and the strict quality control system to guarantee the best performance of the products.

# PASSIONATE DRIVING

ULTRA HIGH PERFORMANCE TIRE

HU901/HU905



## HU901 ULTRA HIGH PERFORMANCE TIRE



### CHARACTERS

#### Big pattern design:

Greatly improving cornering stability at high speed.

#### Straight Lined central rib design:

Maneuverability is highly improved.

#### Four main rib design:

Better avoiding slippery.

#### Asymmetric tread design:

Offers better sporting performance.



OUTSIDE



Best footprint shape simulated by computer offers excellent braking performance.



- 1 Pitched pattern design reduces driving noise.
- 2 Special compound improves driving and gripping performance while maintaining excellent heat-resistant and wear-resistant ability.
- 3 Rim protection bar to protect the rim from any external damage.
- 4 All-new jointless protection layer improves the durability and braking performance, offers even landing and safe driving.
- 5 High strength steel belt reduces rolling resistance. To be more fuel saving and environmental while maintaining the driving safety.







# HU905

ULTRA HIGH PERFORMANCE TIRE



## CHARACTERS



**Shoulder Design**  
Variable pitch sequence design and continuous shoulder tread pattern blocks disperses road noise greatly.



**Wide tread design**  
Provides the best ground contact area and improves the maneuverability of high-speed at corner, guarantees the stability during running.



**Pattern Design**  
Asymmetric thread design provides excellent grip force in the crooked roads and good water drainage performance.



**Four Wide Groove**  
Increases drainage performance and effectively avoids slippery.



- 1 Special rubber compound improves heat resistance, good abrasion resistance, driving performance and grip.
- 2 RIM protection, protect wheels from accidental damage.
- 3 Layer of protection uses new materials, as well as the seamless technology, improve braking and durability, tread the ground more evenly and improving handling safety.
- 4 High tensile steel belt, lower rolling resistance, increased handling safety and more fuel and protect the environment.



## HU905

Rim	Size	LI/SS	Tread Depth (mm)	Std. Rim	Section Width (mm)	Overall Diameter (mm)	Standard Pressure (Kpa/PSI)
16	195/55ZR16	87W	8.2	6J	201	620	300/44
	205/55ZR16	91W	8.2	6 1/2J	214	632	300/44
	205/60R16	92V	8.0	6J	209	652	300/44
17	205/45ZR17	88W XL	8.2	7 1/2J	206	616	340/50
	205/50ZR17	93Y XL	8.2	6 1/2J	214	638	340/50
	225/45ZR17	94Y XL	8.2	7 1/2J	225	634	340/50
	225/50ZR17	98Y XL	8.2	7 1/2J	233	658	340/50
	225/55ZR17	97Y	8.2	7 1/2J	233	680	300/44
	225/40ZR18	92Y XL	8.2	8J	230	637	340/50
18	225/45ZR18	95Y XL	8.2	7 1/2J	225	659	340/50
	245/40ZR18	97Y XL	8.2	8 1/2J	248	653	340/50
	245/45ZR18	100Y XL	8.2	8J	243	677	340/50
	245/50ZR18	100Y	8.0	7 1/2J	253	703	300/44
	255/35ZR18	94Y XL	8.0	9J	260	635	340/50
	255/40ZR18	95Y	8.0	9J	260	661	300/44
	275/40ZR18	99Y	8.2	9 1/2J	278	677	300/44
	275/40ZR18	103Y XL	8.2	9 1/2J	278	677	340/50
	315/30ZR18	98Y	8.0	11J	320	647	300/44
	245/45ZR19	102Y XL	8.2	8J	243	703	340/50
19	255/35ZR19	96Y XL	8.0	9J	260	661	340/50
	275/40ZR19	105Y XL	8.2	9 1/2J	278	703	340/50
	265/30ZR20	94Y XL	7.8	9 1/2J	271	668	340/50
20	275/30ZR20	97Y XL	8.0	9 1/2J	278	674	340/50
	285/30ZR20	99Y XL	7.8	10J	290	680	340/50
	295/30ZR20	101Y XL	8.0	10 1/2J	301	686	340/50
22	265/40ZR22	106W XL	7.8	9 1/2J	271	771	340/50
	305/40ZR22	110W	8.2	11J	313	803	300/44
	305/40ZR22	114W XL	8.2	11J	313	803	340/50
26	305/30ZR26	109W XL	8.2	11J	313	844	340/50

**LOW NOISE LEVEL**  
HIGH PERFORMANCE TIRE

HH301 / HH306



**HH301**  
HIGH PERFORMANCE TIRE



**CHARACTERS**

Widened shoulder tread design increases contacting area, providing better driving stability and reliability.

Continuous straight center rib design provides optimized ground contacting area, guarantees better driving safety.



4 wide longitudinal grooves design greatly improves water drainage and driving stability on slippery roads.

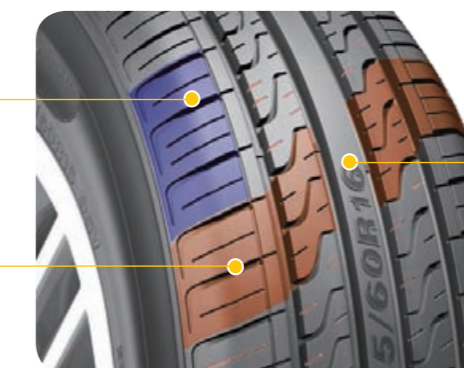


Lateral "S" shaped groove ensures better wet grip.

**Excellent Low Noise Level**

Optimized variable pitch sequence design disperses road noise and reduces vibration, driving comfort is highly improved.

Symmetrical pattern design and small notched design on the tread increases the friction between the tire and the ground, driving comfort is significantly improved.



**Artistic Design**

Size engraving in the central rib reveals the stylish design.



**HH301**

Rim	Size	LI/SS	Tread Depth (mm)	Std. Rim	Section Width (mm)	Overall Diameter (mm)	Standard Pressure (Kpa/PSI)
13	175/70R13	82T	7.8	5.00B	177	576	300/44
	175/70R13	82H	7.8	5.00B	177	576	300/44
	175/65R14	82T	8.0	5J	177	584	300/44
	175/65R14	82H	8.0	5J	177	584	300/44
	175/70R14	84T	8.2	5J	177	602	300/44
	175/70R14	84H	8.2	5J	177	602	300/44
	175/70R14	88T XL	8.2	5J	177	602	340/50
14	185/60R14	82T	8.4	5 1/2J	189	578	300/44
	185/60R14	82H	8.4	5 1/2J	189	578	300/44
	185/65R14	86T	8.0	5 1/2J	189	596	300/44
	185/65R14	86H	8.0	5 1/2J	189	596	300/44
	185/70R14	88T	8.0	5 1/2J	189	616	300/44
	185/70R14	88H	8.0	5 1/2J	189	616	300/44
	195/60R14	86H	8.4	6J	201	590	300/44
	195/70R14	91T	8.0	6J	201	630	300/44
	195/70R14	91H	8.0	6J	201	630	300/44
	205/60R14	88H	7.9	6J	209	602	300/44
	185/55R15	82V	8.0	6J	194	585	300/44
	185/60R15	88H XL	8.0	5 1/2J	189	603	340/50
	185/65R15	88H	8.0	5 1/2J	189	621	300/44
	185/65R15	92T XL	8.0	5 1/2J	189	621	340/50
15	195/50R15	82V	8.0	6J	201	577	300/44
	195/55R15	85V	8.0	6J	201	595	300/44
	195/60R15	88H	8.4	6J	201	615	300/44
	195/60R15	88V	8.4	6J	201	615	300/44
	195/65R15	91H	8.0	6J	201	635	300/44
	195/65R15	91V	8.0	6J	201	635	300/44
	205/60R15	91V	8.2	6J	209	627	300/44
	205/65R15	94V	8.5	6J	209	647	300/44
	205/70R15	96T	8.2	6J	209	669	300/44
	205/70R15	96H	8.2	6J	209	669	300/44
	215/65R15	100H XL	8.2	6 1/2J	221	661	340/50
	215/70R15	98T	8.2	6 1/2J	221	683	300/44
	215/70R15	98H	8.2	6 1/2J	221	683	300/44
	235/75R15	105T	8.2	6 1/2J	235	733	300/44
16	235/75R15	105S	8.2	6 1/2J	235	733	300/44
	195/60R16	89H	8.4	6J	201	640	300/44
	205/55R16	91V	8.0	6 1/2J	214	632	300/44
	205/55R16	94W XL	8.0	6 1/2J	214	632	340/50
	205/60R16	92H	8.2	6J	209	652	300/44
	205/60R16	92V	8.2	6J	209	652	300/44
	205/60R16	96V XL	8.2	6J	209	652	340/50
	215/55R16	93V	8.2	7J	226	642	300/44
	215/60R16	95H	8.2	6 1/2J	221	664	300/44
	215/60R16	95V	8.2	6 1/2J	221	664	300/44
	215/60R16	99V XL	8.2	6 1/2J	221	664	340/50
	215/65R16	98T	8.5	6 1/2J	221	686	300/44
	215/65R16	98H	8.5	6 1/2J	221	686	300/44
	225/60R16	98H	8.5	6 1/2J	228	676	300/44
17	235/60R16	100H	8.5	7J	240	688	300/44
	235/60R16	100V	8.5	7J	240	688	300/44
	235/60R16	104H XL	8.5	7J	240	688	340/50
	235/65R16	103H	8.2	7J	240	712	300/44
	225/60R17	99T	8.2	6 1/2J	228	702	300/44
	225/60R17	99H	8.2	6 1/2J	228	702	300/44



**HH306**

**HIGH PERFORMANCE TIRE**



**CHARACTERS**

**1 Excellent Grip Performance**

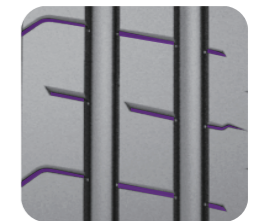
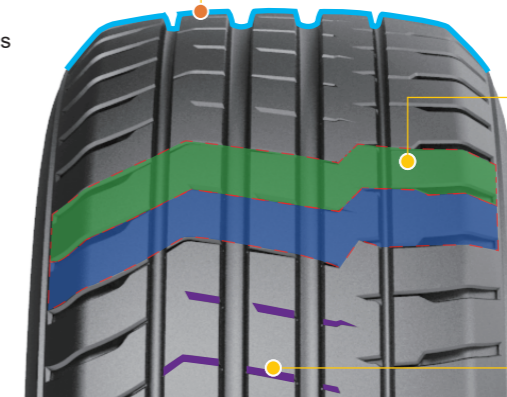
Asymmetrical pattern design ensures the grip of the tire when turning and improves the handling performance.

**2 Optimizing the tread width of the driving surface and the high proportion of the upper and lower cambered surface improves the wet grip performance.**

**3 Low Noise and More Comfortable**

Dual pitch design with optimal pitch order can effectively reduce the noise peak.

**4 The staggered steel sheet on tread center and semi-enclosed shoulder design reduce the tire noise.**







**HH306**

Rim	Size	LI/SS	Tread Depth (mm)	Std. Rim	Section Width (mm)	Overall Diameter (mm)	Standard Pressure (Kpa/PSI)
13	155/65R13	73T	7.0	4.50B	157	532	300/44
	155/70R13	75T	7.0	4.50B	157	548	300/44
	165/65R13	77T	7.0	5.00B	170	544	300/44
	165/70R13	79T	7.0	5.00B	170	562	300/44
	165/70R13	83T XL	7.0	5.00B	170	562	340/50
	175/60R13	77T	7.0	5.00B	177	540	300/44
	185/70R13	86T	7.0	5.00B	189	590	300/44
14	155/65R14	75H	7.0	4 1/2J	157	558	300/44
	155/65R14	75T	7.0	4 1/2J	157	558	300/44
	165/60R14	75H	7.0	5J	170	554	300/44
	165/60R14	75T	7.0	5J	170	554	300/44
	165/65R14	79T	7.0	5J	170	570	300/44
	165/65R14	83T XL	7.0	5J	170	570	340/50
	165/70R14	81H	7.0	5J	170	588	300/44
	165/70R14	81T	7.0	5J	170	588	300/44
	175/65R14	82H	7.0	5J	177	584	300/44
	175/65R14	82T	7.0	5J	177	584	300/44
	185/60R14	82H	7.0	5 1/2J	189	578	300/44
	185/60R14	82T	7.0	5 1/2J	189	578	300/44
	185/65R14	86H	7.0	5 1/2J	189	596	300/44
	185/65R14	86T	7.0	5 1/2J	189	596	300/44
15	185/70R14	88H	7.0	5 1/2J	189	616	300/44
	185/70R14	88T	7.0	5 1/2J	189	616	300/44
	205/70R14	95H	7.5	6J	209	644	300/44
	205/70R14	95T	7.5	6J	209	644	300/44
	175/65R15	84H	7.5	5J	177	609	300/44
	175/65R15	84T	7.5	5J	177	609	300/44
	185/65R15	88H	7.2	5 1/2J	189	621	300/44
	185/65R15	88T	7.2	5 1/2J	189	621	300/44
	195/60R15	88H	7.5	6J	201	615	300/44
	195/60R15	88T	7.5	6J	201	615	300/44
16	195/65R15	91H	7.2	6J	201	635	300/44
	195/65R15	91V	7.2	6J	201	635	300/44
	205/65R15	94V	7.5	6J	209	647	300/44
	205/65R15	94H	7.5	6J	209	647	300/44
	205/55R16	91V	7.2	6 1/2J	214	632	300/44
	205/55R16	94V XL	7.2	6 1/2J	214	632	340/50
16	215/60R16	99V XL	7.5	6 1/2J	221	664	340/50
	215/60R16	99H XL	7.5	6 1/2J	221	664	340/50

**SUPER COMFORTABLE DRIVING**  
SUV, COMMERCIAL CAR TIRE

HR801/HR802/HR805





# HR801

## SUV, COMMERCIAL CAR TIRE



### CHARACTERS

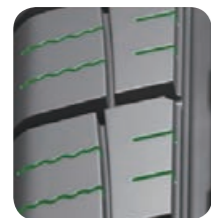
**Excellent Handling** – Optimized tread design ensuring the excellent handling performance under all-weather conditions.

**Low Noise** – Optimized 5 pitch tread design reduces the patter noise and to improve the comfortness.



#### Optimized Pattern Design

Through 5 pitch design effectively reduces noise and improves comfort.



#### The excellent pattern design

Small notched design on tread patterns improves the durability of the tire and the grip performance on wet ground.



#### Excellent Drainage Performance

4 longitudinal grooves interconnecting with the edge grooves offers better drainage performance, safety driving under rainy weather is further guaranteed consequently.



#### “Pop-up” Design

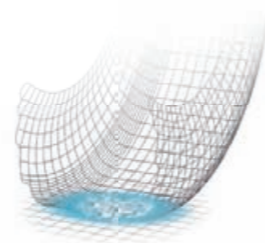
Stepped groove design avoids small stones embedded into tire patterns damaging the tire, better guarantees the driving stability.



- 1 Jointless and high-strength nylon covering layer.
- 2 High tension steel belt.
- 3 Dual carcass construction.
- 4 Jointless and high-strength bead steel wire.

#### Super Silica Compound

All new winter silica compounded tread provides super grip power on wet ground and less rolling resistance.



# HR801

Rim	Size	LI/SS	Tread Depth (mm)	Std. Rim	Section Width (mm)	Overall Diameter (mm)	Standard Pressure (Kpa/PSI)
15	215/75R15	100S	9.5	6J	216	703	300/44
	215/75R15	100H	9.5	6J	216	703	300/44
	225/70R15	100S	8.0	6 1/2J	228	697	300/44
	225/70R15	100H	8.0	6 1/2J	228	697	300/44
	235/75R15	105S	9.5	6 1/2J	235	733	300/44
	235/75R15	105H	9.5	6 1/2J	235	733	300/44
16	215/65R16	98H	9.5	6 1/2J	221	686	300/44
	265/70R16	112S	9.5	8J	272	778	300/44
	225/60R17	99H	9.5	6 1/2J	228	702	300/44
	225/65R17	102H	9.0	6 1/2J	228	724	300/44
	235/55R17	99H	9.5	7 1/2J	245	690	300/44
	235/55R17	99S	9.5	7 1/2J	245	690	300/44
17	235/65R17	104S	9.2	7J	240	738	300/44
	235/65R17	104H	9.2	7J	240	738	300/44
	235/65R17	108H XL	9.2	7J	240	738	340/50
	245/65R17	107T	8.8	7J	248	750	300/44
	265/70R17	115T	9.0	8J	272	804	300/44
	265/70R17	115H	9.0	8J	272	804	300/44



# HR802

## SUV, COMMERCIAL CAR TIRE



### CHARACTERS

#### Excellent Water Drainage Performance

Big angle pattern block and four main ribs design ensure effective water drainage and safer driving on wet ground.



Widen "U" shape groove provides better water drainage performance.

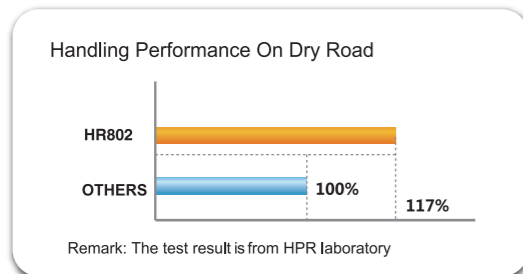
#### Safe Handling Performance



Solid shoulder pattern design provides accurate maneuverability on direction and braking.



#### Performance Test



### HR802

Rim	Size	LI/SS	Tread Depth (mm)	Std. Rim	Section Width (mm)	Overall Diameter (mm)	Standard Pressure (Kpa/PSI)
15	P235/75R15	105H	8.7	6 1/2J	235	733	300/44
	LT235/75R15	104/101Q	8.7	6 1/2J	235	733	350/50
	P215/60R16	94T	9.0	6 1/2J	221	664	300/44
	P225/70R16	101H	8.7	6 1/2J	228	722	300/44
	P235/70R16	106H	9.5	7J	240	736	300/44
	P235/75R16	109T	8.7	6 1/2J	235	758	340/50
	P245/70R16	107H	8.7	7J	248	750	300/44
	P245/70R16	111H XL	8.7	7J	248	750	340/50
	P245/75R16	111H	9.5	7J	248	774	300/44
	P255/70R16	111H	9.5	7 1/2J	260	764	300/44
16	P265/70R16	112H	9.5	8J	272	778	300/44
	P265/75R16	116H	9.5	7 1/2J	267	804	300/44
	LT215/85R16	115/112Q	8.7	6J	216	772	550/80
	LT225/75R16	115/112Q	9.5	6J	223	744	550/80
	LT235/85R16	120/116Q	10.3	6 1/2J	235	806	550/80
	LT245/75R16	120/116Q	10.3	7J	248	774	550/80
	LT265/75R16	123/120Q	10.3	7 1/2J	267	804	550/80
	LT285/75R16	122/119Q	10.3	8J	286	834	450/65
	LT285/75R16	126/123Q	10.3	8J	286	834	550/80
	P245/65R17	107H	8.7	7J	248	750	300/44
17	P245/70R17	110H	9.5	7J	248	776	300/44
	P255/65R17	110H	9.5	7 1/2J	260	764	300/44
	P255/70R17	112H	9.5	7 1/2J	260	790	300/44
	P265/65R17	112H	9.5	8J	272	776	300/44
	P265/70R17	115H	10.3	8J	272	804	300/44
	P275/65R17	113T	8.7	8J	279	790	300/44
	LT245/75R17	121/118Q	9.9	7J	248	800	550/80
	LT265/70R17	112/109Q	10.3	8J	272	804	350/50
	LT265/70R17	121/118Q	10.3	8J	272	804	550/80
	LT285/70R17	116/113Q	10.3	8 1/2J	292	832	350/50
18	LT285/70R17	121/118Q	10.3	8 1/2J	292	832	550/80
	P265/60R18	109T	8.7	8J	272	775	300/44



# HR805

SUV, COMMERCIAL CAR TIRE

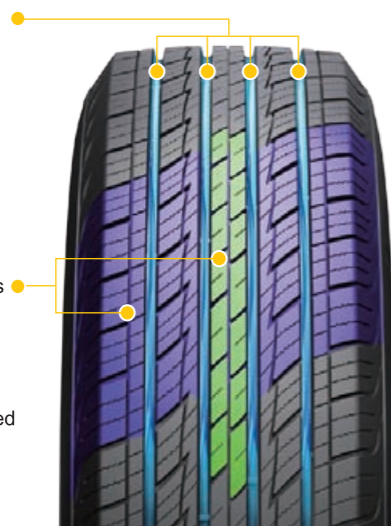


## CHARACTERS

4 longitudinal grooves design guarantees the safe maneuverability on the both dry and wet road.

Superior tread design provides excellent maneuverability and grip performance under all weather conditions.

Noise is dispersed by increased numbers of pitches and the optimized angle design.



Lateral pattern grooves on shoulder part ensures the best drainage performance.

Rim	Size	LI/SS	Tread Depth (mm)	Std. Rim	Section Width (mm)	Overall Diameter (mm)	Standard Pressure (Kpa/PSI)
15	265/70R15	112H	8.5	8J	272	753	300/44
	215/65R16	98H	8.5	6 1/2J	221	686	300/44
	215/65R16	102H XL	8.5	6 1/2J	221	686	340/50
	215/70R16	100H	8.5	6 1/2J	221	708	300/44
	215/70R16	104H XL	8.5	6 1/2J	221	708	340/50
16	225/70R16	103H	8.7	6 1/2J	228	722	300/44
	235/60R16	104V XL	8.5	7J	240	688	340/50
	235/70R16	106H	8.5	7J	240	736	300/44
	245/70R16	107H	8.5	7J	248	750	300/44
	245/70R16	107T	8.5	7J	248	750	300/44
	255/70R16	111T	8.5	7 1/2J	260	764	300/44
	265/70R16	112T	8.5	8J	272	778	300/44
	215/60R17	96H	8.5	6 1/2J	221	690	300/44
	225/65R17	102H	8.5	6 1/2J	228	724	300/44
	235/65R17	108H XL	8.5	7J	240	738	340/50
17	245/65R17	107H	8.8	7J	248	750	300/44
	245/70R17	110H	8.5	7J	248	776	300/44
	255/60R17	110H XL	8.5	7 1/2J	260	738	340/50
	255/65R17	114H XL	8.5	7 1/2J	260	764	340/50
	265/65R17	112H	8.5	8J	272	776	300/44
	265/65R17	116H XL	8.5	8J	272	776	340/50
	265/70R17	115T	8.5	8J	272	804	300/44
	275/65R17	119H XL	8.7	8J	279	790	340/50
	225/60R18	100H	8.2	6 1/2J	228	727	300/44
	235/50R18	101W XL	8.5	7 1/2J	245	693	340/50
18	235/60R18	103H	8.5	7J	240	739	300/44
	275/60R20	119H XL	8.5	8J	279	838	340/50

# YOUR ECONOMICAL SOLUTION FOR TRANSPORTATION

## LIGHT TRUCK TIRE

HR601/HR602/HR605





# HR601

## LIGHT TRUCK TIRE



### CHARACTERS

**Economic & Durable:** Widened tread design and special tread compound improves driving stability and wear-resistant performance.

**Great Adaptability:** Longitudinal groove design and lateral pattern design offers better grip ability on wet ground, applicable perfectly for rural transportation needs.

**Travel Free:** Three longitudinal deepened grooves provides outstanding drainage performance on wet ground.

**Heavy Load & Anti-wear:** Reinforced carcass and unique tread compound design guarantees heavy load ability.



#### “Pop-up” Design

Stepped groove design avoids small stones embedded into tire patterns.



**Enhanced Carcass Design**  
Reinforced carcass design guarantees heavy load ability.

**Excellent Drainage Performance**  
“Z” shape groove design provides better drainage Performance, making the pattern more applicable for rural road conditions.

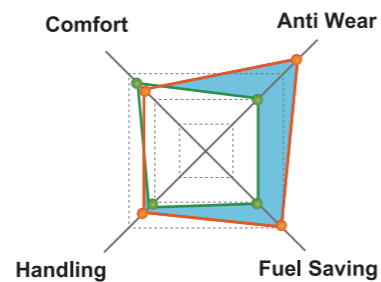
**More Wear-Resistant & More Economic**  
Wide tread pattern design improves the wear-resistant performance. All new compound offers lower fuel consumption and guarantees rural driving safety.

### Performance Test

Anti Wear Ratio Comparison



● HR601  
● OTHERS



## HR601

Rim	Size	LI/SS	PR	Tread Depth (mm)	Std. Rim	Section Width (mm)	Overall Diameter (mm)	Standard Pressure (Kpa/PSI)
13	155R13C	90/88P	8	8.2	4 1/2J	157	578	450/65
	155R13C	90/88R	8	8.2	4 1/2J	157	578	450/65
	165R13C	94/93P	8	8.2	4 1/2J	165	594	450/65
	165R13C	94/93Q	8	8.2	4 1/2J	165	594	450/65
14	165/70R13C	88/86Q	6	8.8	5J	170	562	375/55
	175/70R14C	95/93Q	6	9.0	5J	177	602	375/55
	175/70R14C	95/93T	6	9.0	5J	177	602	375/55
	185R14C	102/100Q	8	10.0	5 1/2J	189	652	450/65
	185R14C	102/100R	8	10.0	5 1/2J	189	652	450/65
	195R14C	106/104Q	8	10.0	5 1/2J	201	668	450/65
15	195R14C	106/104R	8	10.0	5 1/2J	201	668	450/65
	195/70R15C	104/102T	8	10.0	6J	201	655	450/65
	195/70R15C	93/90Q	6	10.0	6J	201	655	375/55
	195/70R15C	93/90R	6	10.0	6J	201	655	375/55
	195/70R15C	104/102R	8	10.0	6J	201	655	450/65
	195R15C	106/104Q	8	10.0	5 1/2J	196	693	450/65
	195R15C	106/104R	8	10.0	5 1/2J	196	693	450/65
	225/70R15C	100/97Q	6	9.0	6 1/2J	228	697	350/50
	225/70R15C	112/110R	8	9.0	6 1/2J	228	697	450/65
	225/70R15C	112/110T	8	9.0	6 1/2J	228	697	450/65
16	185/75R16C	100/97R	8	9.0	5J	184	684	450/65
	185/75R16C	104/102R	8	9.0	5J	184	684	480/70
	195/65R16C	104/102Q	8	8.3	6J	201	660	480/70
	195/65R16C	104/102R	8	8.3	6J	201	660	480/70
	195/75R16C	107/105R	8	9.0	5 1/2J	196	698	480/70
	205/65R16C	107/105T	8	8.3	6J	209	672	480/70
	205/65R16C	107/105R	8	8.3	6J	209	672	480/70
	205/75R16C	113/111R	10	9.2	6J	203	714	550/80
	205/75R16C	110/108R	8	9.2	6J	203	714	450/65
	215/65R16C	109/107R	8	8.3	6 1/2J	221	686	480/70
	215/65R16C	109/107T	8	8.3	6 1/2J	221	686	480/70
	215/75R16C	112/109R	10	9.2	6J	216	728	550/80
225/65R16C	112/110Q	8	10.0	6 1/2J	228	698	480/70	
225/65R16C	112/110R	8	10.0	6 1/2J	228	698	480/70	
235/65R16C	115/113R	8	9.2	7J	240	712	480/70	
235/65R16C	115/113T	8	9.2	7J	240	712	480/70	
235/65R16C	121/119R	10	9.2	7J	240	712	575/83	



# HR602

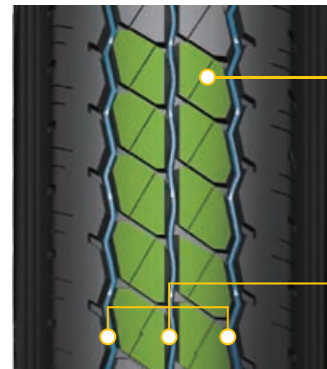
## LIGHT TRUCK TIRE



### CHARACTERS

**Safety:** Three longitudinal grooves design and wide rib shaped pattern design enhances the water drainage performance and handling safety.

**Extra long mileage:** Enhanced tire body construction design and optimized compound offers extra long mileage. The small notched design on shoulder part reduces heat generation and guarantees the driving safety.



Wide rib shaped pattern design and the optimized notched design enhances the grip performance.

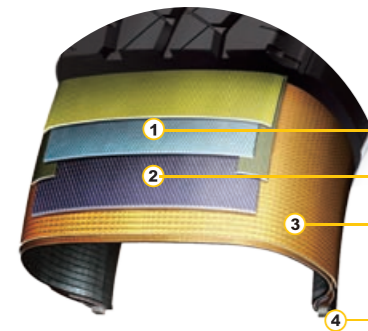
Drainage grooves increase the driving safely and handling performance on wet ground.



Enhanced tire body construction design guarantees the driving safety.

The small notched design on shoulder part reduces heat generation and noise, increases the applicability on all road conditions.

### Strengthened Tire Body Construction



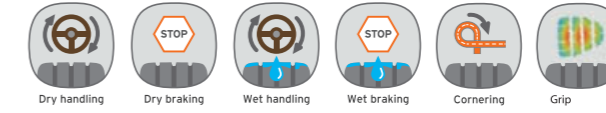
- ① Jointless and strengthened nylon cover belt.
- ② Higher tensility steel belt.
- ③ Duplex and high endurance tire body construction.
- ④ High tensility and jointless steel for bead toe area.

Rim	Size	LI/SS	PR	Tread Depth (mm)	Std. Rim	Section Width (mm)	Overall Diameter (mm)	Standard Pressure (Kpa/PSI)
16	6.50R16LT (TL)	107/102L	10	10.4	5.50F	185	750	560/81
	6.50R16LT(TT)	107/102L	10	10.4	5.50F	185	750	560/81
	6.50R16LT(TT)	107/102N	10	10.4	5.50F	185	750	560/81
	7.00R16LT (TL)	111/107L	10	10.4	5.50F	200	775	560/81
	7.00R16LT (TL)	115/110L	12	10.4	5.50F	200	775	670/97
	7.00R16LT(TT)	115/110L	12	10.4	5.50F	200	775	670/97
	7.00R16LT(TT)	115/110M	12	10.4	5.50F	200	775	670/97
	7.00R16LT(TT/TL)	115/110N	12	10.4	5.50F	200	775	670/97
	7.50R16LT (TL)	122/118L	14	11.0	6.00G	215	805	770/112
	7.50R16LT(TT)	122/118L	14	11.0	6.00G	215	805	770/112
	7.50R16LT(TT)	122/118M	14	11.0	6.00G	215	805	770/112
	7.50R16LT(TT/TL)	120/116N	12	11.0	6.00G	215	805	670/97



# HR605

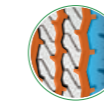
## LIGHT TRUCK TIRE



### CHARACTERS



Stronger carcass construction helps effectively improve endurance and loading performance.



At the time to enhance tire traction, confident to provide excellent drainage and improve wet-skid resistance.



Wider central pattern block provides strong driving performance.

Rim	Size	LI/SS	PR	Tread Depth (mm)	Std. Rim	Section Width (mm)	Overall Diameter (mm)	Standard Pressure (Kpa)
12	155R12LT/C	88/86N	6PR	7.0	4.5B	157	550	350
	155R12LT/C	88/86N	8PR	7.0	4.5B	157	550	450
	155R13LT/C	85/83N/S	6PR	7.0	4.5B	157	578	350
	155R13LT/C	90/88N/S	8PR	7.0	4.5B	157	578	450
13	165/70R13LT/C	88/86S	8PR	7.0	5.0B	170	562	450
	165/70R13LT/C	88/86S	6PR	7.0	5.0B	170	562	375
	165R13LT/C	94/92S	8PR	7.5	4.5B	167	596	450
	175R13LT/C	97/95R	8PR	8.0	5.0B	177	610	450
14	165R14LT/C	96/95R	8PR	7.5	4 1/2J	167	622	450
	185R14LT/C	102/100R	8PR	7.0	5 1/2J	188	650	450
	195R14LT/C	105/103N	6PR	9.0	5 1/2J	196	668	350
	195R14LT/C	105/103N	8PR	9.0	5 1/2J	196	668	450
15	205R14LT/C	109/107N	6PR	9.5	6J	208	684	375
	205R14LT/C	109/107N	8PR	9.5	6J	208	684	450
	185R15LT/C	103/102R	6PR	9.5	5 1/2J	189	677	350
	185R15LT/C	103/102R	8PR	9.5	5 1/2J	189	677	450
	195R15LT/C	107/105N	6PR	9.0	5 1/2J	196	693	350
	195R15LT/C	107/105N	8PR	9.0	5 1/2J	196	693	450
	195/85R15LT/C	113/111L	8PR	10.0	5 1/2J	196	693	450
	185/75R16LT/C	100/97R	8PR	10.0	5J	184	684	450
	185/75R16LT/C	104/102 R	8PR	10.0	5J	184	684	475
	195/85R16LT/C	114/112L	12PR	10.0	5 1/2J	185	750	670
16	205/85R16LT/C	117/115L	12PR	10.0	6J	215	805	670
	6.50R16LT (TL)	110/105M	12PR	10.0	5.5F	185	750	670
	6.50R16LT (TT)	110/105M	12PR	10.0	5.5F	185	750	670
	6.50R16LT (TL)	107/102N/M	10PR	10.0	5 1/2J	185	750	560
	6.50R16LT (TT)	107/102N/M	10PR	10.0	5.5F	185	750	560
	7.00R16LT (TL)	115/110N	12PR	10.0	5 1/2J	200	775	670
	7.00R16LT (TT)	115/110N	12PR	10.0	5.5F	200	775	670
	7.50R16LT (TL)	120/116N	12PR	10.0	6J	215	805	670
7.50R16LT (TT)	120/116N	12PR	10.0	6.0G	215	805	670	

# FREE MOVING WITH NO FEAR

ALL-TERRAIN & MUD TERRAIN TIRE

HR701/HM003

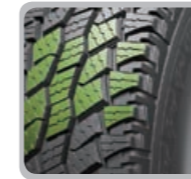


## HR701

ALL-TERRAIN TIRE



### CHARACTERS



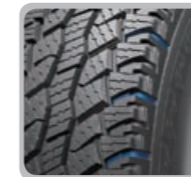
#### Tread Pattern Design

Big tread pattern design increases the contacting area with the ground, offering excellent handling and braking performance on all terrain and all weather conditions.



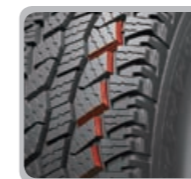
#### Appearance Design

Exquisite sidewall pattern design represents the fashion and uniqueness of the tire.



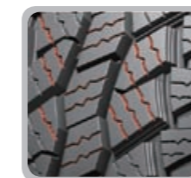
#### Open Shoulder Design

Heat release ability is improved by open shoulder design, tire durability and driving safety is greatly enhanced.



#### "Pop-up" Design

Stepped groove design avoids small stones embedded into tire patterns damaging the tire, better guarantees the driving stability.



#### Durability

Deep waved grooves improve the durability of the tread and wet grip performance on all terrain road conditions.





**HR701**

Rim	Size	LI/SS	PR	Tread Depth (mm)	Std. Rim	Section Width (mm)	Overall Diameter (mm)	Standard Pressure (Kpa/PSI)
15	205/65R15	94H	4	8.5	6J	209	647	300/44
	205/70R15	96H	4	8.4	6J	209	669	300/44
	205/70R15	96T	4	8.4	6J	209	669	300/44
	31X10.50R15LT	109R	6	13.0	8 1/2J	268	775	350/50
	31X10.50R15LT	109S	6	13.0	8 1/2J	268	775	350/50
	31X10.50R15LT	109Q	6	13.0	8 1/2J	268	775	350/50
	LT215/75R15	100/97Q	6	12.5	6J	216	703	350/50
	LT235/75R15	104/101R	6	12.5	6 1/2J	235	733	350/50
	LT235/75R15	104/101Q	6	12.5	6 1/2J	235	733	350/50
	LT225/75R16	115/112Q	10	10.0	6J	223	744	550/80
16	235/85R16LT	120/116Q	10	12.5	6 1/2J	235	806	550/80
	LT265/75R16	123/120Q	10	13.0	7 1/2J	267	804	550/80
	LT285/75R16	122/119Q	8	13.0	8J	286	834	450/65
	LT245/75R16	120/116Q	10	12.5	7J	248	774	550/80
	235/80R17LT	121/118Q	10	10.0	6 1/2J	235	808	550/80
17	245/70R17LT	119/116Q	10	13.0	7J	248	776	550/80
	245/75R17LT	121/118Q	10	10.0	7J	248	800	550/80
	LT265/70R17	118/115Q	8	13.0	8J	272	804	450/65
18	285/70R17LT	121/118Q	10	11.5	8 1/2J	292	832	550/80
	LT275/65R18	123/120Q	10	13.0	8J	279	815	550/80



**HM003**

**MUD TERRAIN TIRE**



**CHARACTERS**



The bionic tiger claw pattern provides strong grip on the mountain filed, desert, mud and other bad road conditions.



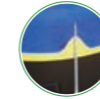
Shield sidewall design with 6-7mm thicker than the ordinary tire, the tire damage probability is reduced by 80%.



The up-and-down groove can throw out the mud easily and has better braking ability.



The bump design in the shoulder groove can prevent stone and reduce the damage to the tire.



The self-repairing technology ensures great puncture resistance.



Rim	Size	LI/SS	Tread Depth (mm)	Std. Rim	Section Width (mm)	Overall Diameter (mm)	Standard Pressure (Kpa)
15	215/75R15LT	106/103N	15.5	6J	216	703	450
	235/75R15LT	110/107N	15.5	6 2/1J	235	733	450
	30*9.50R15LT	104N	15.5	7 1/2J	240	750	350
	31*10.50R15LT	109N	15.5	8 1/2J	268	775	350
	33*12.50R15LT	108N	15.5	10J	318	826	250
	35*12.50R15LT	113Q	15.5	10J	318	877	250
16	225/75R16LT	110/107N	15.5	6J	223	744	450
	245/75R16LT	114/111N	15.5	7J	248	774	450
	265/70R16LT	117/114N	15.5	8J	272	778	450
	265/75R16LT	119/116N	15.5	7 1/2J	267	804	450
	285/75R16LT	122/119N	15.5	8J	286	834	450
17	245/70R17LT	114/110N	15.5	7J	248	776	450
	265/65R17LT	120/117N	15.5	8J	272	776	550
	265/70R17LT	118/115N	15.5	8J	272	804	450
	33*12.50R17	120Q	15.5	10J	318	826	450
	35*12.50R17	121Q	15.5	10J	318	877	350
	37*13.50R17LT	121Q	15.5	11J	345	928	350
	18	235/60R18	103N	15.5	7J	240	739
33*12.50R18		118Q	15.5	10J	318	826	450
35*12.50R18		123Q	15.5	10J	318	877	450
20	33*12.50R20	114Q	15.5	10J	318	826	450
	35*12.50R20	121Q	15.5	10J	318	877	450
	37*13.50R20LT	127Q	15.5	10J	318	928	450
	33*12.50R22	109Q	15.5	10J	318	826	450
22	35*12.50R22	117Q	15.5	10J	318	877	450
	37*13.50R22LT	123Q	15.5	11J	345	928	450
26	37*13.50R26LT	117Q	15.5	11J	345	928	450



**WORRY-FREE COMPANIONSHIP  
THROUGHOUT THE YEAR  
ALL SEASON TIRE**

PMS01/PMS02



**PMS01  
ALL SEASON TIRE**



**CHARACTERS**



Design of single guide pattern groove provide excellent high speed handling performance in straight line.

The capillary groove structure provides better performance of braking and handling to ensure the safety of the four seasons.



Design of thin sipes patten on shoulder provide quiet and comfortable ride experience.

Multi-chip mold without porosity design for nice appearance.



Rim	Size	LI/SS	Tread Depth (mm)	Std. Rim	Section Width (mm)	Overall Diameter (mm)	Standard Pressure (Kpa/PSI)
18	275/65R18	116T	8.0	8J	279	815	300/44
	235/60R18	107HXL	8.0	7J	240	739	340/50
	235/50R18	101VXL	8.0	7 1/2J	245	693	340/50
	245/65R17	107T	8.0	7J	248	750	300/44
	235/55R17	103HXL	8.0	7 1/2J	245	690	340/50
	225/65R17	102H	8.0	6 1/2J	228	724	300/44
17	225/60R17	99V	8.0	6 1/2J	228	702	300/44
	225/55R17	101HXL	8.0	7J	233	680	340/50
	225/50R17	98VXL	8.0	7J	233	658	340/50
	225/45ZR17	94WXL	8.0	7 1/2J	225	634	340/50
	215/60R17	96H	8.0	6 1/2J	221	690	300/44
	215/55R17	98HXL	8.0	7J	226	668	340/50
	205/55R17	95VXL	8.0	6 1/2J	214	658	340/50
	205/50R17	93VXL	8.0	6 1/2J	214	638	340/50
	235/70R16	106H	8.0	7J	240	736	300/44
	225/60R16	98H	8.0	6 1/2J	228	676	300/44
16	225/55R16	95H	8.0	7J	233	654	300/44
	215/70R16	104HXL	8.0	6 1/2J	221	708	340/50
	215/65R16	98H	8.0	6 1/2J	221	686	300/44
	215/60R16	99HXL	8.0	6 1/2J	221	664	340/50
	215/55R16	97VXL	8.0	7J	226	642	340/50
	205/60R16	96HXL	8.0	6J	209	652	340/50
	205/55R16	94VXL	8.0	6 1/2J	214	632	340/50
	195/55R16	91HXL	8.0	6J	201	620	340/50
	205/65R15	94H	8.0	6J	209	647	300/44
	205/60R15	91H	8.0	6J	209	627	300/44
	195/65R15	91V	8.0	6J	201	635	300/44
	195/60R15	88H	8.0	6J	201	615	300/44
15	195/55R15	85H	8.0	6J	201	595	300/44
	195/50R15	86HXL	8.0	6J	201	577	340/50
	185/65R15	88H	8.0	5 1/2J	189	621	300/44
	185/60R15	88HXL	8.0	5 1/2J	189	603	340/50
	185/55R15	82H	8.0	6J	194	585	300/44
	175/65R15	84T	8.0	5J	177	609	300/44
	165/60R15	77T	8.0	5J	170	579	300/44
	185/65R14	86T	8.0	5 1/2J	189	596	300/44
	185/60R14	82T	8.0	5 1/2J	189	578	300/44
	175/70R14	88TXL	8.0	5J	177	602	340/50
14	175/65R14	82T	8.0	5J	177	584	300/44
	165/70R14	81T	7.5	5J	170	588	300/44
	165/65R14	79T	7.5	5J	170	570	300/44
	165/60R14	75T	7.5	5J	170	554	300/44
	155/65R14	75T	7.5	4 1/2J	157	558	300/44
	175/70R13	82T	7.5	5.00B	177	576	300/44
13	165/70R13	79T	7.5	5.00B	170	562	300/44
	155/80R13	79T	7.5	4.50B	157	578	300/44
	155/70R13	75T	7.5	4.50B	157	548	300/44



# PMS02

## ALL SEASON TIRE



### CHARACTERS

Zigzag traversal pattern on tread edge helps the tire perform stronger traction in snow.



Stronger carcass construction helps effectively improve endurance and loading performance.



Acute angle pattern on shoulder helps obviously improve the handling performance of four seasons.

Open grooves are designed to provide excellent self-cleaning capability and outstanding traction.

Rim	Size	LI/SS	Tread Depth (mm)	Std. Rim	Section Width (mm)	Overall Diameter (mm)	Standard Pressure (Kpa/PSI)
16	235/65R16C	115/113R	9.0	7J	242	708	450/65
	225/65R16C	111/108R	8.5	6 1/2J	234	694	550/80
	215/75R16C	113/111R	8.5	6J	217	724	450/65
	205/65R16C	107/105T	8.5	6J	210	668	450/65
	195/75R16C	107/105R	8.5	5 1/2J	196	694	450/65
15	225/70R15C	112/109R	8.5	6 1/2J	236	694	550/80
	215/70R15C	109/107R	8.5	6 1/2J	222	679	450/65
	215/65R15C	107/103R	8.5	6J	228	657	550/80
	195/70R15C	104/101R	8.5	6 1/2J	209	651	550/80

# SAFE CHOICE FOR WINTER

## WINTER TIRE

HW501/HW505/HW507/HW508

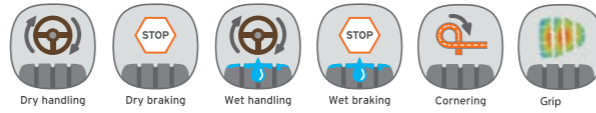




# HW501



## STUDDABLE WINTER TIRE



### CHARACTERS



#### Tread Pattern Design

Perfect braking & grip power on snow/ice road conditions provided by directional pattern and studdable design.



#### Super Braking Power

6% widened tread design offers even landing area, improves braking and wear resistant performance on snow/ice terrain.



#### Excellent Drainage Performance

"V" groove design delivers perfect water drainage performance when snow melts, ensuring safer and more stable driving.



#### Optimized tire body construction design guarantees the driving safety.

1. Jointless and high-strength nylon covering layer.
2. High tension steel belt.
3. Dual carcass construction.
4. Jointless and high-strength bead steel wire.



## HW501

Rim	Size	LI/SS	Tread Depth (mm)	Std. Rim	Section Width (mm)	Overall Diameter (mm)	Standard Pressure (Kpa/PSI)
13	155/80R13	79T	9.7	4.50B	157	578	300/44
	175/70R13	82T	9.7	5.00B	177	576	300/44
	165/60R14	75T	7.6	5J	170	554	300/44
	175/65R14	82T	10.5	5J	177	584	300/44
14	175/70R14	84T	9.7	5J	177	602	300/44
	175/70R14	88T XL	9.7	5J	177	602	340/50
	185/60R14	82T	10.5	5 1/2J	189	578	300/44
	185/60R14(S)	82T	9.3	5 1/2J	189	578	300/44
	185/65R14	86T	10.5	5 1/2J	189	596	300/44
	185/70R14	88T	9.7	5 1/2J	189	616	300/44
	195/70R14	91T	10.5	6J	201	630	300/44
	185/60R15	84T	9.7	5 1/2J	189	603	300/44
	185/65R15	88T	10.5	5 1/2J	189	621	300/44
	185/65R15(S)	88T	8.7	5 1/2J	189	621	300/44
15	195/55R15	85T	9.7	6J	201	595	300/44
	195/60R15	88T	10.5	6J	201	615	300/44
	195/65R15	91T	10.5	6J	201	635	300/44
	195/65R15	91H	10.5	6J	201	635	300/44
	195/65R15(S)	91H	8.7	6J	201	635	300/44
	205/60R15	91T	9.7	6J	209	627	300/44
	205/70R15	96T	10.0	6J	209	669	300/44
	215/60R15	94T	9.7	6 1/2J	221	639	300/44
	215/70R15	98T	11.0	6 1/2J	221	683	300/44
	195/60R16	89T	9.7	6J	201	640	300/44
16	205/55R16	91T	10.5	6 1/2J	214	632	300/44
	205/55R16(S)	94H XL	8.7	6 1/2J	214	632	340/50
	205/60R16	92T	9.7	6J	209	652	300/44
	215/55R16	93T	9.7	7J	226	642	300/44
	215/65R16	98T	10.0	6 1/2J	221	686	300/44
	225/50R16	92T	9.7	7J	233	632	300/44
	225/55R16	95T	9.7	7J	233	654	300/44
	225/60R16	98T	10.3	6 1/2J	228	676	300/44



# HW505



## HIGH PERFORMANCE WINTER TIRE



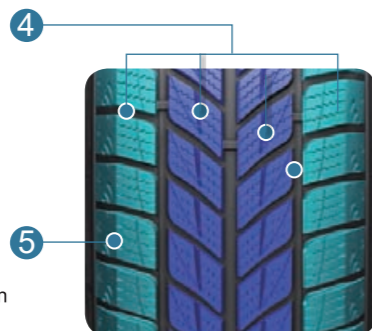
### CHARACTERS



- 1 Drainage performance on ice and snow road**  
 Wide and straight longitudinal groove design improves performance on wet ground.
- 2 Handling performance on ice and snow road**  
 Interval arranged lateral groove design in carter part increase grip ability on snow/ice terrain, guarantees safe handling performance.
- 3 Combination of safety and fasion design**  
 The fine snow-shaped design on the shoulder part combines the fasionable appearance and the driving safety by increasing the friction froce from the shoulder area.

### Breaking performance on ice and snow road

Special studless tread compound greatly improves braking performance in winter.



### Low noise performance on ice and snow road

Optimized pitch arrangement design lower the noise to minimum level.



# HW505

Rim	Size	L/SS	Tread Depth (mm)	Std. Rim	Section Width (mm)	Overall Diameter (mm)	Standard Pressure (Kpa/PSI)
	205/50R17	93T XL	8.7	6 1/2J	214	638	340/50
	205/50R17	93H XL	8.7	6 1/2J	214	638	340/50
	205/50R17	93V XL	8.7	6 1/2J	214	638	340/50
	215/45R17	91T XL	8.7	7J	213	626	340/50
	215/45R17	91V XL	8.7	7J	213	626	340/50
	215/45R17	91H XL	8.7	7J	213	626	340/50
	215/50R17	91H	8.0	7J	226	648	300/44
	225/45R17	94T XL	8.7	7 1/2J	225	634	340/50
	225/45R17	94H XL	8.7	7 1/2J	225	634	340/50
	225/45R17	94V XL	8.7	7 1/2J	225	634	340/50
	225/45R17(D)	94H XL	9.7	7 1/2J	225	634	340/50
	225/50R17	94T	8.7	7J	233	658	300/44
17	225/50R17	94H	8.7	7J	233	658	300/44
	225/50R17	98H XL	8.7	7J	233	658	340/50
	225/50R17	98V XL	8.7	7J	233	658	340/50
	225/55R17	97T	8.7	7J	233	680	300/44
	225/55R17	97H	8.7	7J	233	680	300/44
	225/55R17	101H XL	8.7	7J	233	680	340/50
	225/55R17	101V XL	8.7	7J	233	680	340/50
	235/45R17	97T XL	8.7	8J	236	644	340/50
	235/45R17	97H XL	8.7	8J	236	644	340/50
	235/45R17	97V XL	8.7	8J	236	644	340/50
	235/55R17	99T	8.7	7 1/2J	245	690	300/44
	235/55R17	99H	8.7	7 1/2J	245	690	300/44
	235/55R17	103H XL	8.7	7 1/2J	245	690	340/50
	235/55R17	103V XL	8.7	7 1/2J	245	690	340/50
	255/45R17	102T XL	8.2	8 1/2J	255	662	340/50
	255/45R17	102V XL	8.2	8 1/2J	255	662	340/50
	215/55R18	95H	8.2	7J	226	693	300/44
	225/45R18	95T XL	8.2	7 1/2J	225	659	340/50
	225/45R18	95V XL	8.2	7 1/2J	225	659	340/50
	235/50R18	97H	8.0	7 1/2J	245	693	300/44
	235/55R18	104T XL	8.0	7 1/2J	245	715	340/50
18	235/55R18	104V XL	8.0	7 1/2J	245	715	340/50
	235/55R18	104W XL	8.0	7 1/2J	245	715	340/50
	245/40R18	93H	8.0	8 1/2J	248	653	300/44
	245/45R18	96T	8.2	8J	243	677	300/44
	245/45R18	100T XL	8.2	8J	243	677	340/50
	245/45R18	100V XL	8.2	8J	243	677	340/50
	255/55R18	109T XL	8.2	8J	265	737	340/50
	255/55R18	109V XL	8.2	8J	265	737	340/50
	235/50R19	99H	8.0	7 1/2J	245	719	300/44
	235/55R19	105T XL	8.0	7 1/2J	245	741	340/50
19	235/55R19	105V XL	8.0	7 1/2J	245	741	340/50
	255/45R19	100H	8.2	8 1/2J	255	713	300/44
	255/50R19	107T XL	8.2	8J	265	739	340/50
	255/50R19	107H XL	8.2	8J	265	739	340/50
	255/50R19	107V XL	8.2	8J	265	739	340/50
	255/55R19	107H	8.2	8J	265	763	300/44
	235/55R20	102H	8.0	7 1/2J	245	766	300/44
	255/45R20	105T XL	8.2	8 1/2J	255	738	340/50
	255/45R20	105V XL	8.2	8 1/2J	255	738	340/50
	255/50R20	109H XL	8.2	8J	265	764	340/50
20	255/55R20	107H	8.2	8J	265	788	300/44
	275/40R20	102T	8.2	9 1/2J	278	728	300/44
	275/40R20	106V XL	8.2	9 1/2J	278	728	340/50
	275/45R20	110H XL	8.5	9J	273	756	340/50
	275/45R20	110V XL	8.5	9J	273	756	340/50
	315/35R20	106T	8.8	11J	320	728	300/44



# HW507

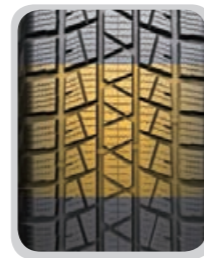
WINTER SUV TIRE



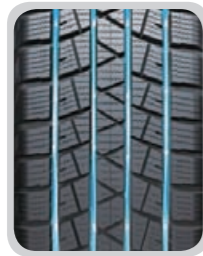
## CHARACTERS



Central rib pattern and multi-sipe design makes excellent braking and steering performance on snow/ice terrain.



Wide tread design increase the contacting area with the ground, guarantees the driving safety on snow/ice terrain.



Combination of longitudinal and lateral grooves to ensure the best water drainage performance.



Excellent pitch arrangement and special tread compound, disperses the noise and makes driving more comfortable.

Rim	Size	LI/SS	Tread Depth (mm)	Std. Rim	Section Width (mm)	Overall Diameter (mm)	Standard Pressure (Kpa/PSI)
15	235/75R15	109Q XL	10.0	6 1/2J	235	733	340/50
	215/65R16	98T	10.0	6 1/2J	221	686	300/44
16	215/70R16	100Q	10.0	6 1/2J	221	708	300/44
	215/70R16	100H	10.0	6 1/2J	221	708	300/44
	235/70R16	106Q	10.0	7J	240	736	300/44
	235/70R16	106T	10.0	7J	240	736	300/44
	265/70R16	112Q	10.0	8J	272	778	300/44
	265/70R16	112T	10.0	8J	272	778	300/44
17	215/60R17	96T	8.5	6 1/2J	221	690	300/44
	215/60R17	96H	8.5	6 1/2J	221	690	300/44
	225/60R17	99T	10.0	6 1/2J	228	702	300/44
	225/65R17	102T	10.0	6 1/2J	228	724	300/44
	225/65R17	102H	10.0	6 1/2J	228	724	300/44
	235/65R17	108T XL	10.0	7J	240	738	340/50
	235/65R17	108H XL	10.0	7J	240	738	340/50
	265/65R17	112Q	10.0	8J	272	776	300/44
	265/65R17	112H	10.0	8J	272	776	300/44
	235/60R18	103T	10.0	7J	240	739	300/44
18	235/60R18	107T XL	10.0	7J	240	739	340/50
	235/60R18	107H XL	10.0	7J	240	739	340/50



# HW508

HIGH PERFORMANCE WINTER TIRE



## CHARACTERS



The unique "V" pattern design of central rib improves the stability of straight driving on the snow and ice road, ensuring the safety of driving.



Application of ultra-low temperature compound helps ensure the softness of tire and driving safety even in -70 condition.

The zigzag design of tire edge can effectively remove the ice water film and improve the stability.

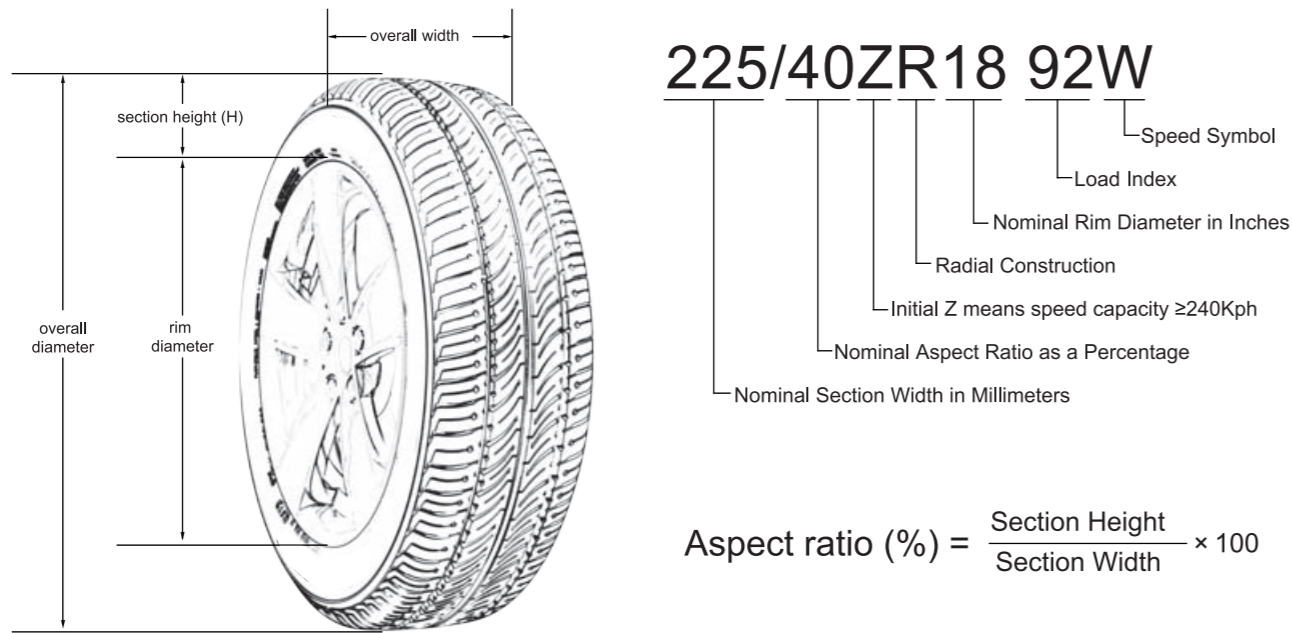


Water suction bag is designed to store and evacuate the water rapidly so as to enhance the ice and snow performance.



Rim	Size	LI/SS	Tread Depth (mm)	Std. Rim	Section Width (mm)	Overall Diameter (mm)	Standard Pressure (Kpa/PSI)
18	225/40R18	92HXL	8.4	8J	230	637	340/50
	225/55R17	97T	8.4	7J	233	680	300/44
17	225/50R17	94H	8.4	7J	233	658	300/44
	225/45R17	94HXL	8.4	7 1/2J	225	634	340/50
	215/55R17	98TXL	8.4	7J	226	668	340/50
	225/55R16	95H	8.4	7J	233	654	300/44
16	215/65R16	102HXL	8.4	6 1/2J	221	686	340/50
	215/60R16	95T	8.4	6 1/2J	221	664	300/44
	215/55R16	93H	8.4	7J	226	642	300/44
	205/60R16	92T	8.4	6J	209	652	300/44
	205/55R16	91T	8.4	6 1/2J	214	632	300/44
	195/55R16	87H	8.4	6J	201	620	300/44
	195/65R15	91T	8.4	6J	201	635	300/44
	195/60R15	88T	8.4	6J	201	615	300/44
	195/55R15	85T	8.4	6J	201	595	300/44
	185/65R15	88T	8.0	5 1/2J	189	621	300/44
15	185/60R15	84T	8.0	5 1/2J	189	603	300/44
	185/55R15	82T	8.0	6J	194	585	300/44
	175/65R15	84T	8.0	5J	177	609	300/44
	185/65R14	86T	8.0	5 1/2J	189	596	300/44
	185/60R14	82T	8.0	5 1/2J	189	578	300/44
	175/70R14	84T	8.0	5J	177	602	300/44
	175/65R14	82T	8.0	5J	177	584	300/44
	165/70R14	81T	8.0	5J	170	588	300/44
	165/65R14	79T	8.0	5J	170	570	300/44
	155/65R14	75T	8.0	4 1/2J	157	558	300/44
14	175/70R13	82T	8.0	5.00B	177	576	300/44
	165/70R13	79T	8.0	5.00B	177	562	300/44
	155/80R13	79T	8.0	4.50B	157	578	300/44
	155/70R13	75T	8.0	4.50B	157	548	300/44
	175/70R13	82T	8.0	5.00B	177	576	300/44

## TECHNICAL KNOWLEDGE



### OTHER MARKINGS:

**P** - as part of the tyre size designation (e.g.,P265/70R15) used to indicate tyres intended for services on passenger cars.

**LT** - as part of the tyre size designation (e.g.,LT235/75R15) used to indicate the tyres are intended for light truck vehicles.

**M+S** - letters used to indicate a tyre suitable for Mud and Snow and/or All Season usage.

**XL** - as part of the tyre size designation (e.g.,225/55R16 XL) used to indicate the tyre can carry more loads as the maximum inflation pressure and load are greater than a standard load version.(Also could be called REINFORCED).

**ZR** - as part of the tyre size designation (e.g.,225/45ZR17 XL) used to indicate the tyre has a maximum speed capability over 240Kilometer/hour.

## SPEED RATING

The speed symbol refers to the maximum speed capabilities of the tyre. It is only valid for tyre that are properly inflated and loaded within their assigned load index.

Speed Symbol	Q	R	S	T	H	V	W	Y	ZR
Maximum Speed (km/hr)	160	170	180	190	210	240	270	300	240 & above

## LOAD INDEX

The load index is the maximum load-carrying capacity of a tyre under a specific condition.

Load Index	KG	LBS
70	335	739
71	345	761
72	355	783
73	365	805
74	375	827
75	387	853
76	400	882
77	412	908
78	425	937
79	437	963
80	450	992
81	462	1019
82	475	1047
83	487	1074
84	500	1102
85	515	1135
86	530	1168
87	545	1202
88	560	1235
89	580	1279
90	600	1323
91	615	1356
92	630	1389
93	650	1433
94	670	1477
95	690	1521
96	710	1565
97	730	1609
98	750	1653
99	775	1709

Load Index	KG	LBS
100	800	1764
101	825	1819
102	850	1874
103	875	1929
104	900	1984
105	925	2039
106	950	2094
107	975	2149
108	1000	2205
109	1030	2271
110	1060	2337
111	1090	2403
112	1120	2469
113	1150	2535
114	1180	2601
115	1215	2679
116	1250	2756
117	1285	2833
118	1320	2910
119	1360	2998
120	1400	3086
121	1450	3197
122	1500	3307
123	1550	3417
124	1600	3527
125	1650	3638
126	1700	3748
127	1750	3858
128	1800	3968
129	1850	4079